



Lutron Hospitality Solution

Operational excellence. Refined experience. Engineered for what's next.



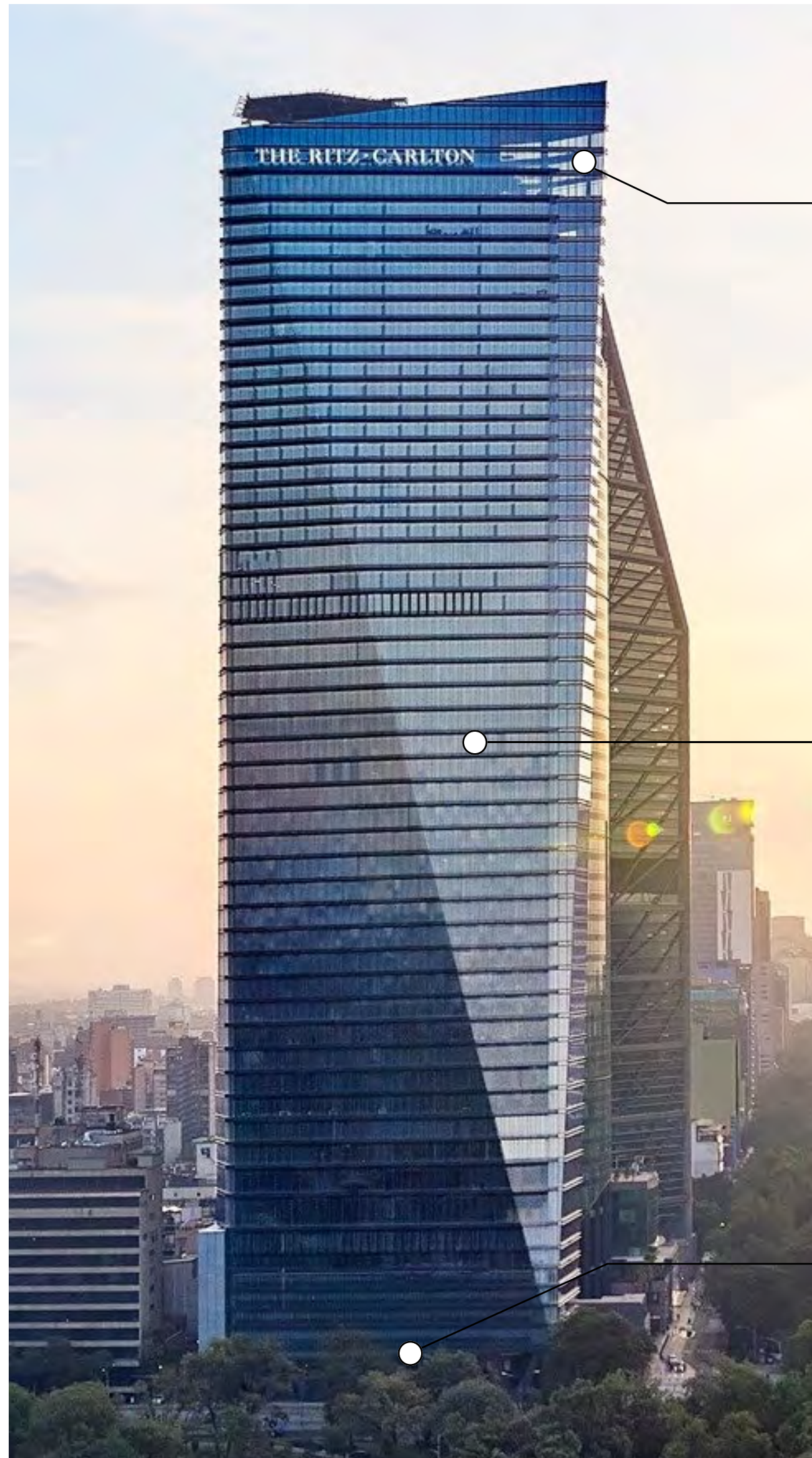
Our Commitment



Lutron Hospitality Solution—it's more than a system; it's an idea, a new way of thinking. A vision of the future, a testament to our passion, and a fulfillment of a promise. The Lutron hospitality solution leverages Lutron's category-defining integrated systems and latest cloud-connected technology to streamline building control and management.

Unified Experience

Different spaces in a property demand varying levels of control. The new, cloud-connected Lutron hospitality solution integrates the entire property under a single platform to simplify and improve property management.



Residences

The HomeWorks and RadioRA 3⁺ systems introduce uncompromising design to next-level home integrations.



Guestrooms

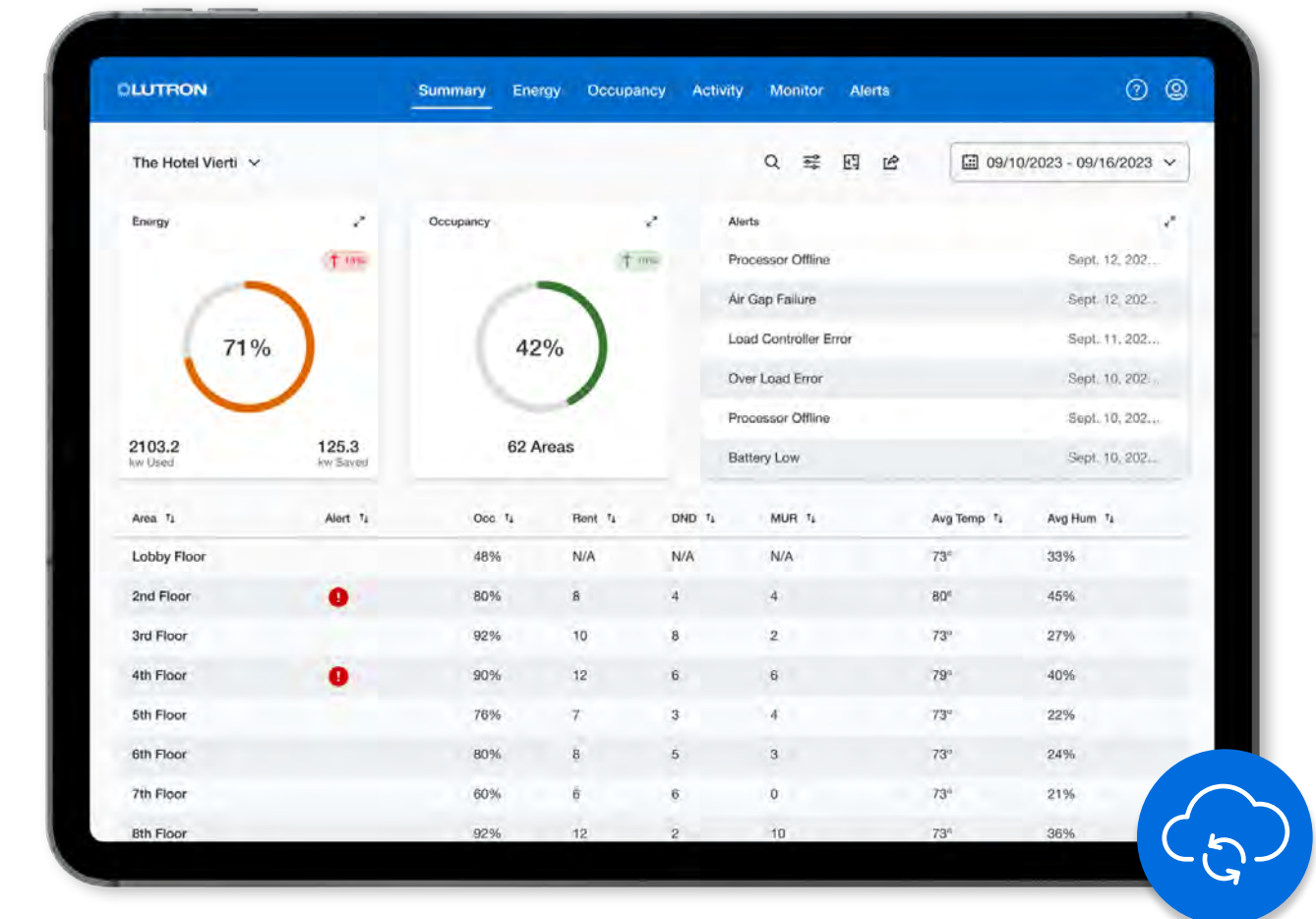
The myRoom XC system makes world-class guestroom experiences second nature.



Public Spaces

The Athena system delivers stand-out spaces that attract guests in lobbies, restaurants, event venues, ballrooms, and other public spaces.

Lutron Dashboard



A single dashboard for the entire property – cloud-connected and accessible from anywhere with a single log-in.

Courtesy of The Ritz-Carlton, Mexico City

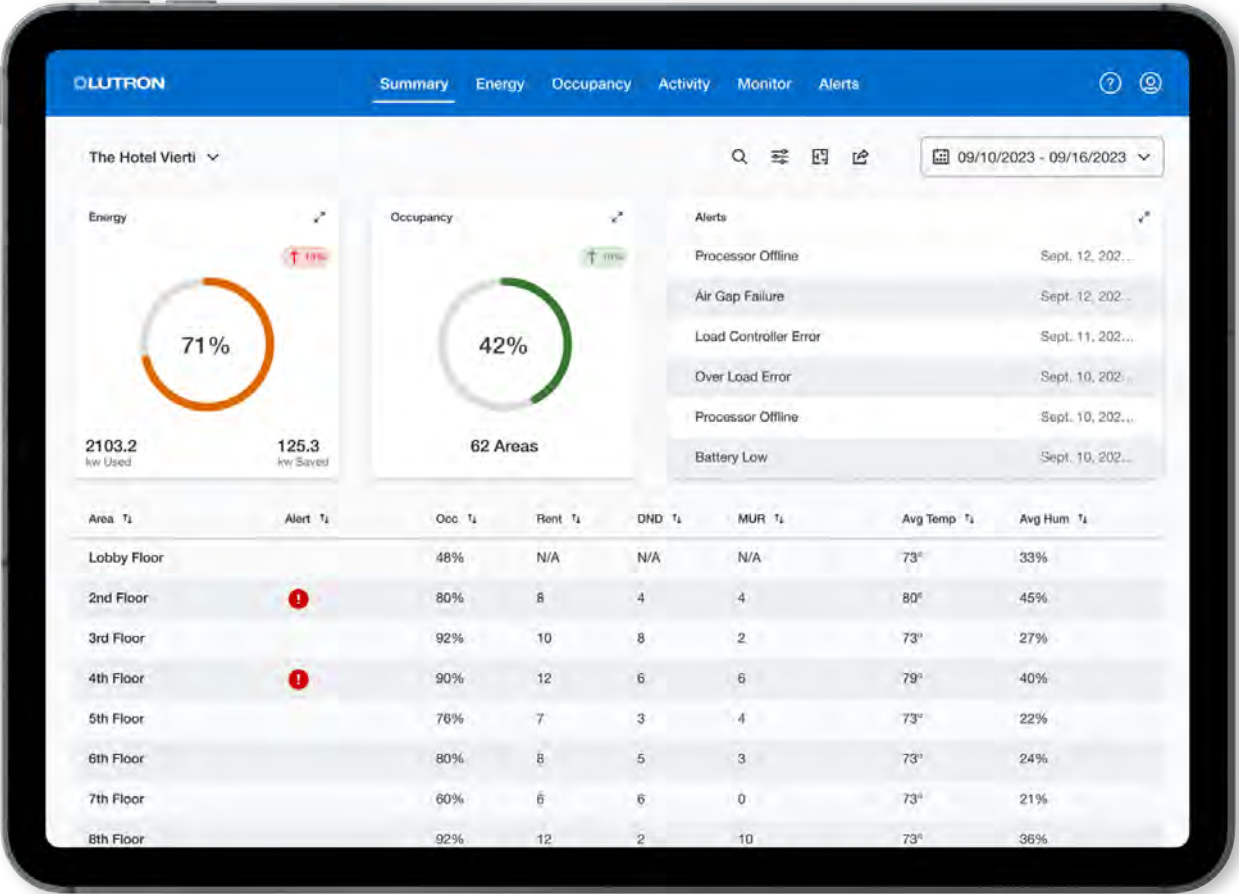
*RadioRA 3 system only available in North America

One Centralized Suite of Tools

Cloud-connected software eliminates the need for server space, accelerates decision making, and fosters an elevated client experience. The future-proof platform supports both remote and automated updates, ensuring your system is always current.

Lutron Dashboard

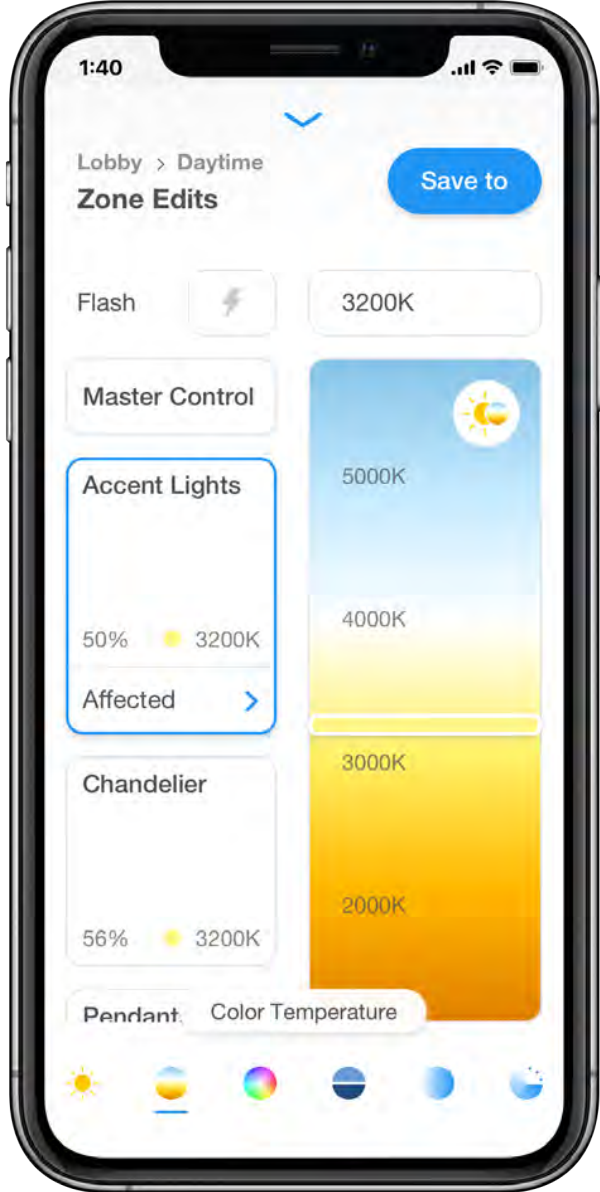
Streamlines building management at scale



Powerful analytical software that visualizes complex data in customer-friendly reports.

Lutron App

Real-time, on-the-go control



Intuitive lighting design and mobile control for public spaces.

System Integrations

Smart connectivity to industry leaders

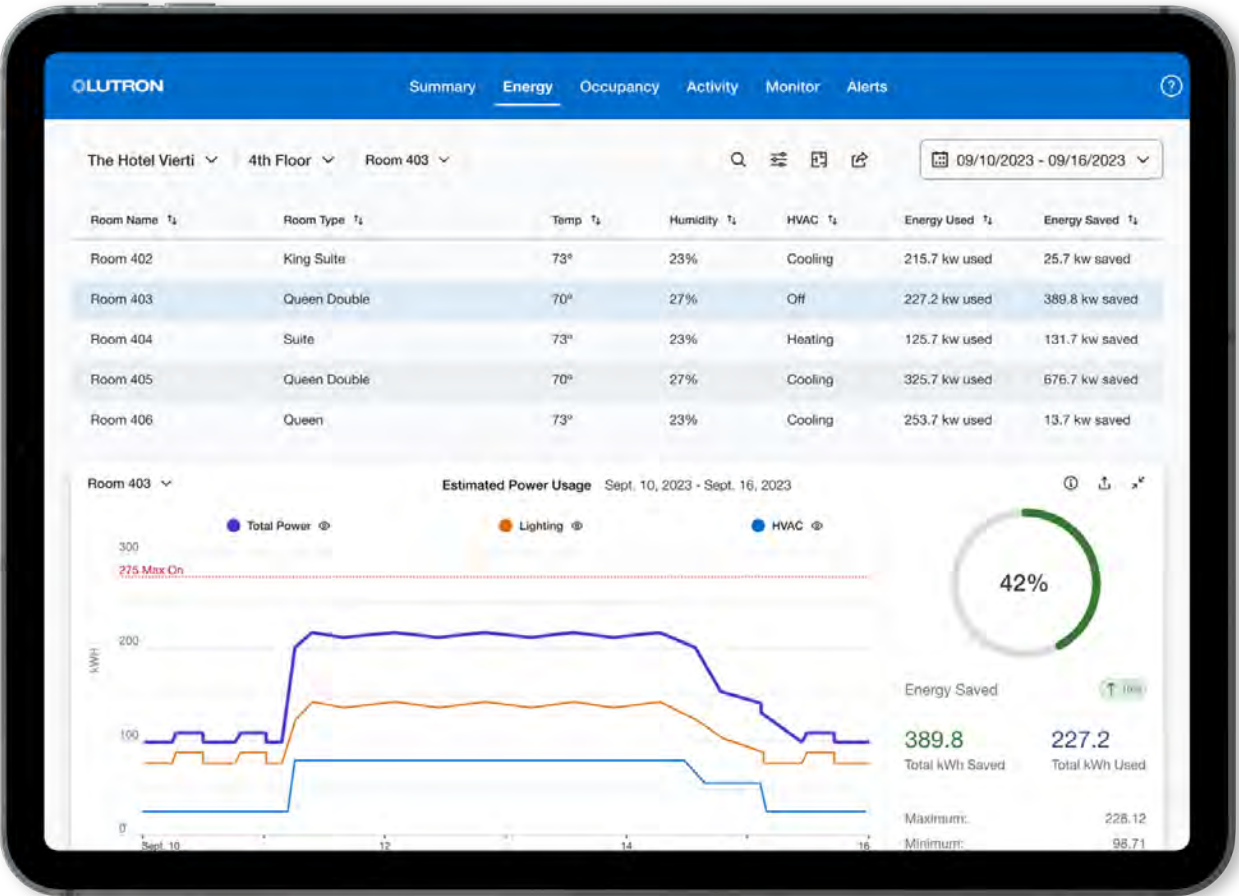


Responsive, reliable, and secure third-party integrations.

Lutron Dashboard

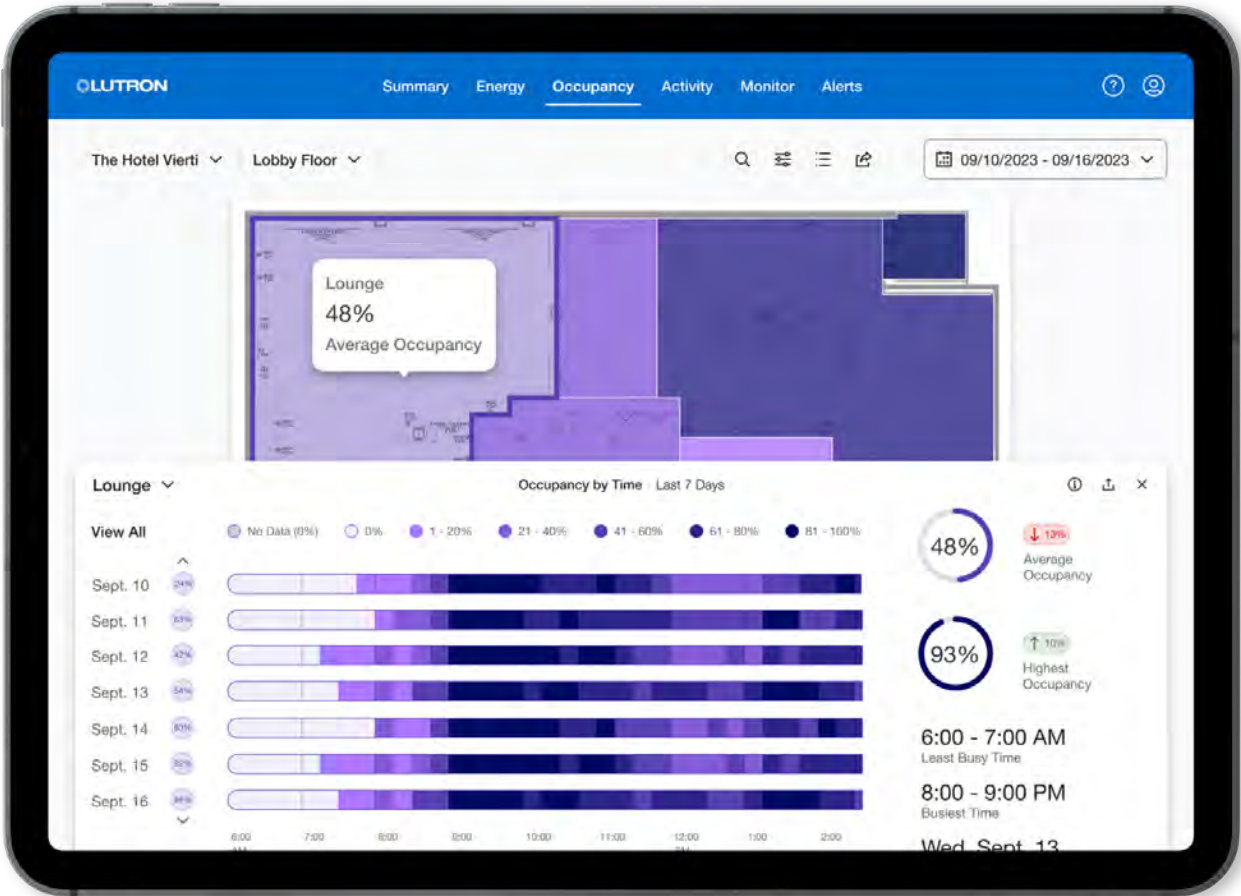
Turn cloud-collected data into actionable insights. Manage your entire property at scale.

Save Energy



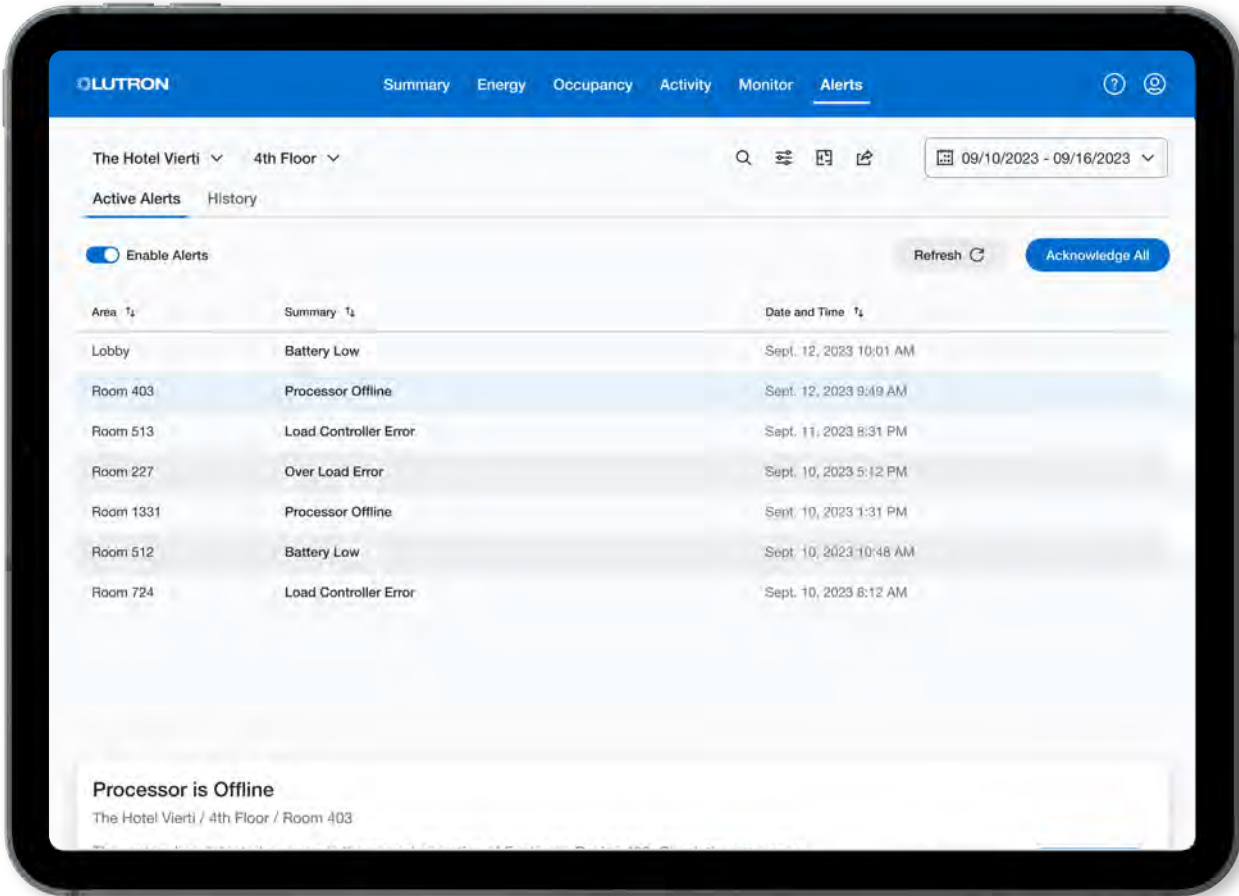
Access energy-use data by building, floor, and room to enhance energy efficiency.

Optimize Space Use



Compare room-performance trends to make strategic real-estate and space-use decisions.

Track Alerts

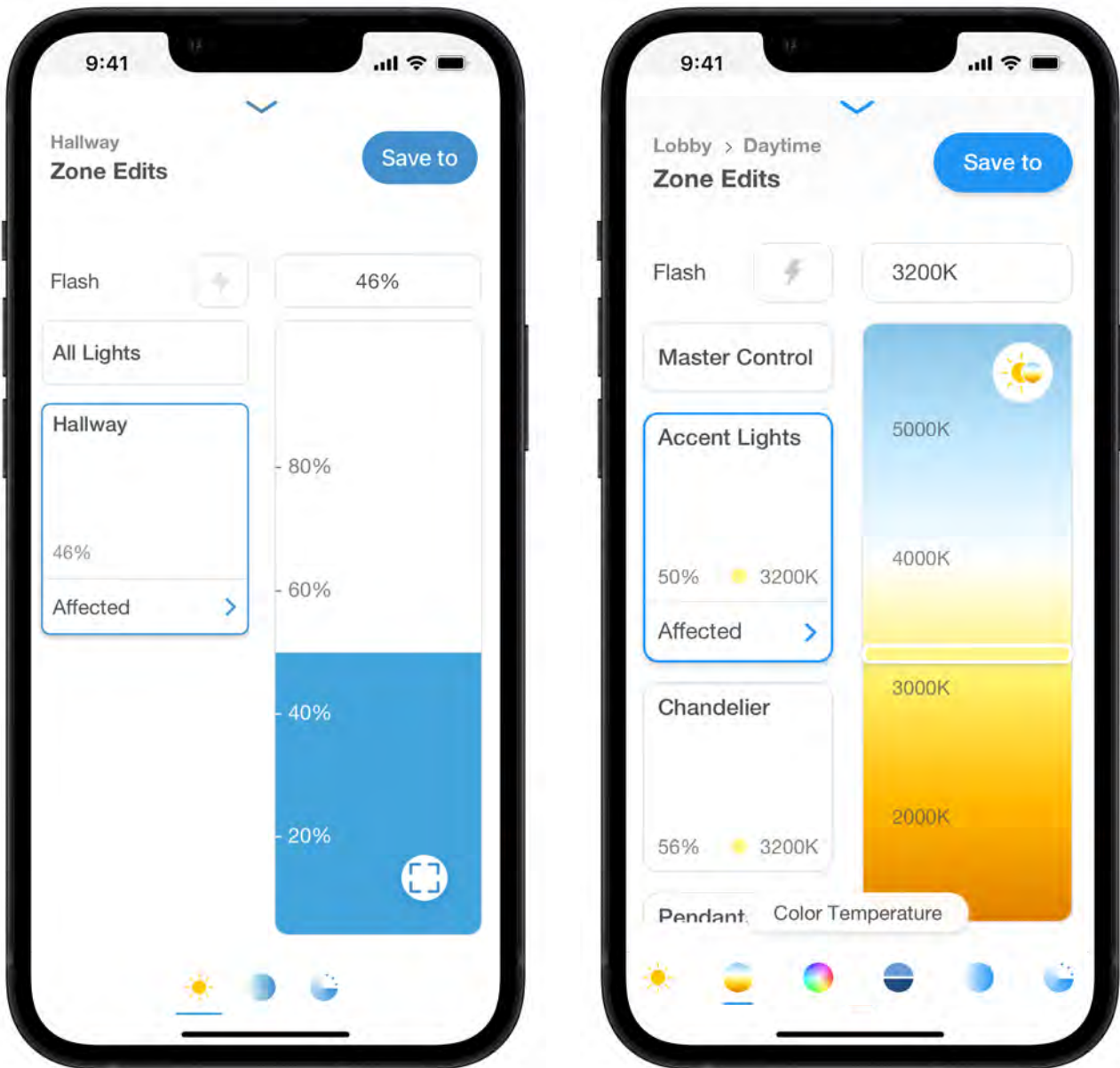


Maximize uptime – system alerts and notifications help you anticipate and quickly troubleshoot issues.

Lutron App

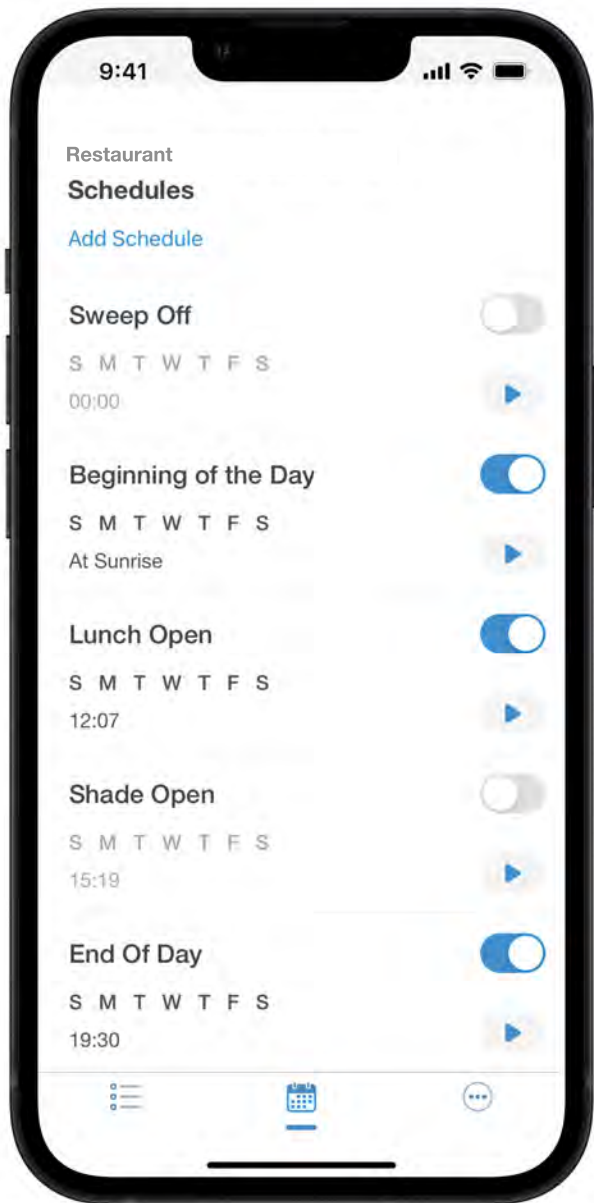
Create sophisticated lighting experiences with the touch of a button with Athena. Program lighting in real time, any time, from anywhere.

Customize Programming



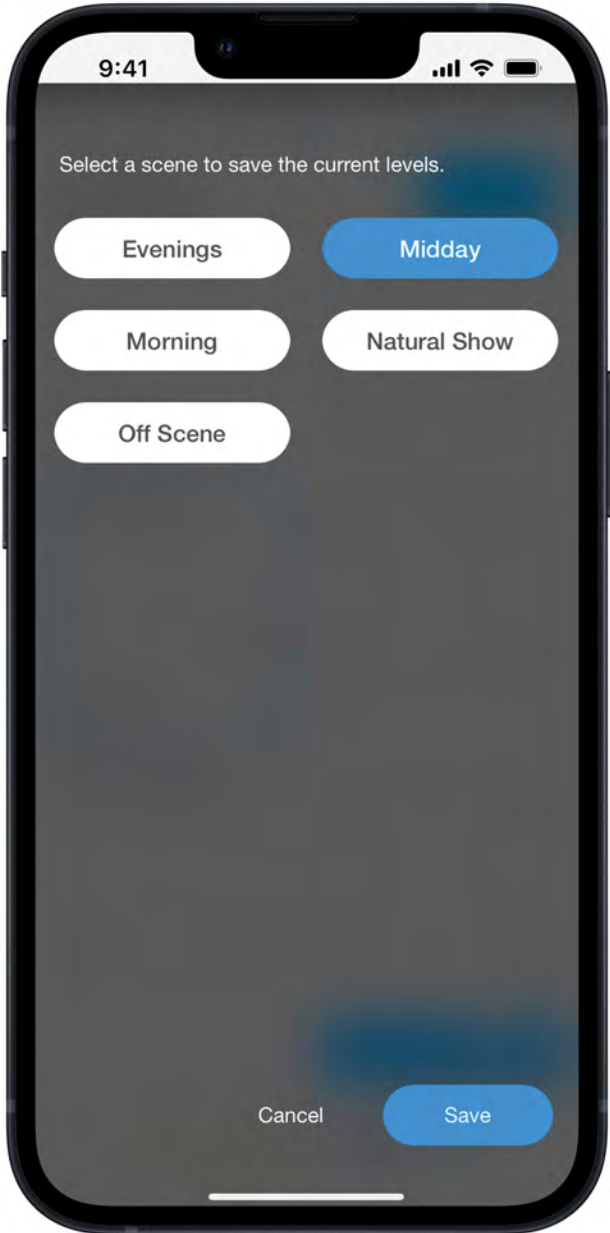
Promote your ability to customize lighting levels, color temperature, and saturated color for extraordinary, personalized events.

Manage Lighting Operations



App-based control ensures property managers can focus on lighting scenes and schedules, and your staff stays focused on the guest experience.

Simplify Setup



Programming is intuitive, and limited only by your imagination. Easily fine-tune, edit, and save lighting scenes.

System Integrations

Locks, climate control, and property management systems combine to simplify control across your portfolio. That's what makes a smart hotel truly intelligent.

Central Electronic Locking Systems (CELS)



Hotel Operations

Property Management Systems (PMS)



In-room tablets/Apps



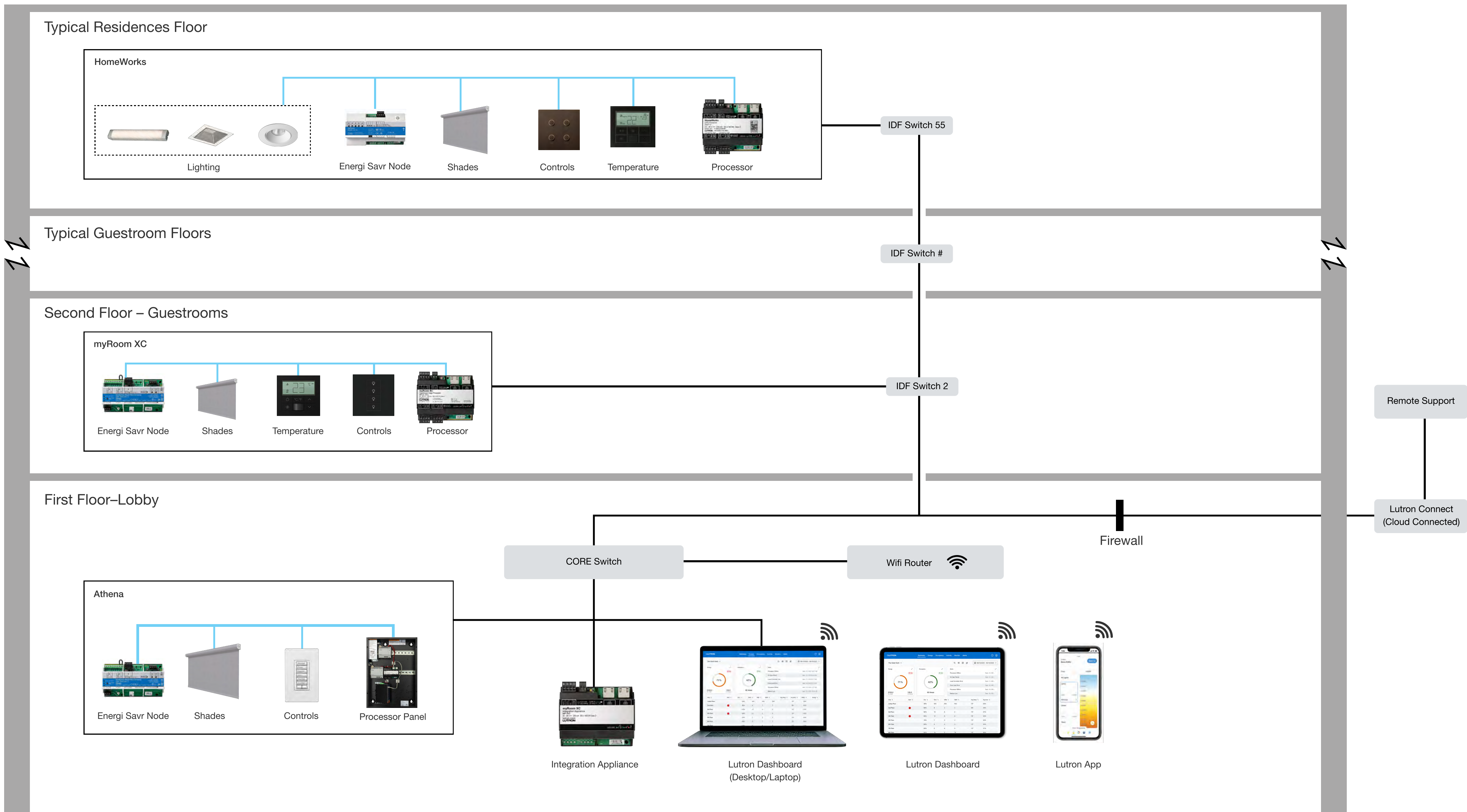
HVAC



Building Management Systems



Whole Hotel System Diagram

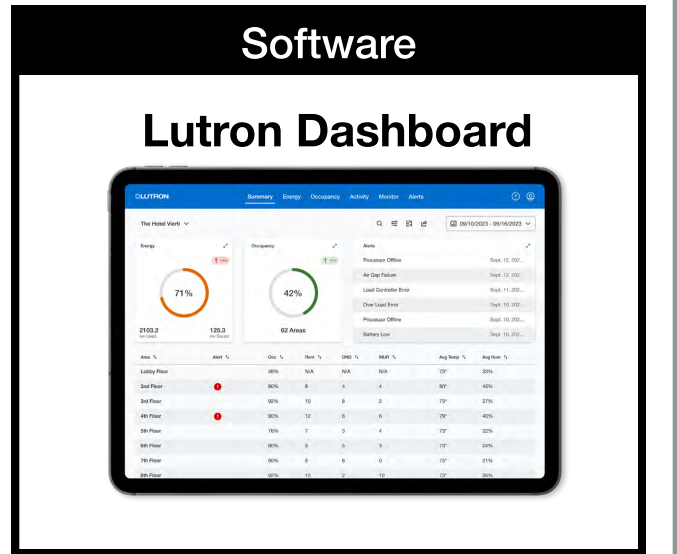
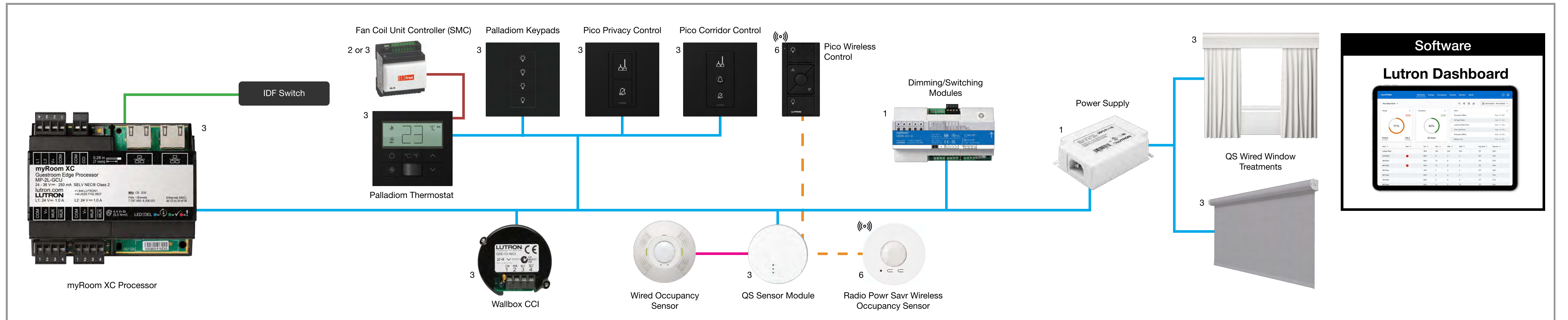


myRoom XC



myRoom XC delivers guestroom control for the next generation of Lutron hospitality. Lights, shades, and climate control — combined into one intuitive, cloud-connected system. The future of hospitality design is here.

myRoom XC Architecture Diagram



Contact Closure Control

- Magnetic contacts (entry door, window, balcony, closet door)
- Door chime
- 3rd-party keypads and lamp switches
- 3rd-party service and privacy controls
- 3rd-party shades
- 3rd-party thermostats (occupancy/vacancy status)

QS Wired Link

- MP-2L-GCU: 99 QS devices per link (512 switchlegs* per link)
- MP-1L-GCU: 50 QS devices per link (256 switchlegs* per link)
- Standard Lutron 4-conductor cable†
- Maximum link run of 610 m (2,000 ft), using 4.0 mm² (#12 AWG) wires for power pair; consult technical specs for other applicable rules
- Free-wire topology (star, daisy chain, home run, etc.)

Lighting Options


- 0-10V
- DALI
- Switching
- Phase Adaptive Dimming

Keypads/Control Options

- Signature Series & Architrave Keypads
- Palladiom Keypads
- seeTouch Keypads

Guestroom Control Unit

- Processor link — 2 RJ-45 Ethernet ports
- 1 or 2 links per processor (RS-485) — QS wired link
- No RS-232 port
- 24 VDC powered
- Mounts in low-voltage enclosures
- Each GCU requires its own unique IP address



myRoom XC capacities

- 1 system can have up to 16 processors

* A switchleg is the smallest controllable point on any product - a single CCO, a zone of 0-10V, or a single DALI address for a fixture.

- **QS wired link**
- **QSM wired sensor link**
- **Clear Connect link**
- **Modbus link**
- **System Ethernet link**

†Pin-out: pin 1 - common, pin 2 - VDC, pin 3 - MUX, pin 4 - MUX

QS-CBL-LSZH (runs up to 153 m) one pair: 1.0 mm², one pair: 0.5 mm² twisted/shielded

GRX-CBL-346S-500 (runs up to 153 m) one pair: 1.0 mm², one pair: 0.5 mm² twisted/shielded

GRX-CBL-46L (runs up to 610 m) one pair: 4.0 mm², one pair: 0.5 mm² twisted/shielded

RS 485, 24 - 35 VDC powered

The wire gauge required for shade power conductors is dependent on shade size and number, wire run length, and power supply type being used. Consult technical specifications of shade equipment for details.

Power

1. Line voltage 120-277 VAC
2. Low voltage 24 VAC
3. Low voltage 24 -35 VDC
4. Low voltage 12 VDC
5. Plug-in transformer
6. Battery powered
7. Power over Ethernet (PoE)

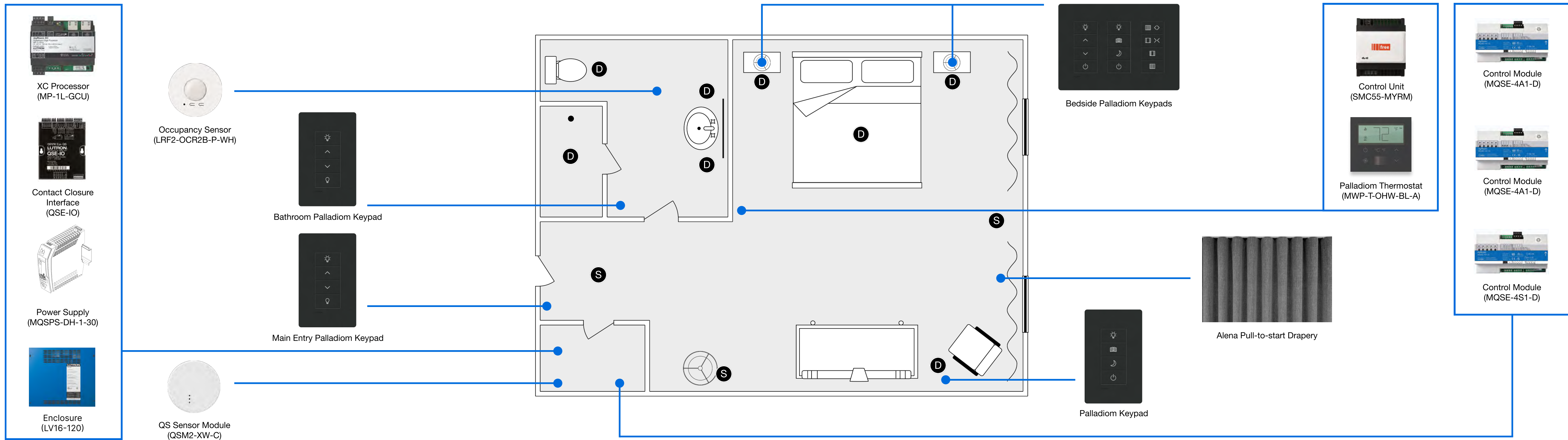
myRoom XC with Architectural Matte Palladiom Keypads & Alena Drapery

Package Includes

- (11) Zones – (8) phase dimmed, (3) switched
 - (5) Black architectural matte finish for Palladiom keypads and (1) thermostat
 - Contact closures for window, balcony, and 3rd-party corridor signage
 - Contact closures for window, balcony, and 3rd-party corridor signage
 - Integration (via integration device) for property management system (PMS) and central electronic lock system (CELS)
 - Connection to Lutron dashboard
 - System project management and programming by Lutron-certified hospitality technology integration (HTI)
 - Seamless integration to Lutron motorized window treatments
- Shades Details:
- Alena pull-to-start drapery tracks
 - Tracks for blackout and sheer draperies
 - Ripplefold, center-draw and ceiling mounted

Sequence of Operations (SOO):

	Unsold Check Out	Sold Check In	Sold Occupied	Sold Unoccupied
Lights	Off	Grand welcome scene	Entry scene	Off
Temperature	Deep setback: hotel setpoint, large drift	Setback mode: hotel setpoint, no drift	Comfort mode: guest controlled, no drift	Setback mode: guest controlled, medium drift

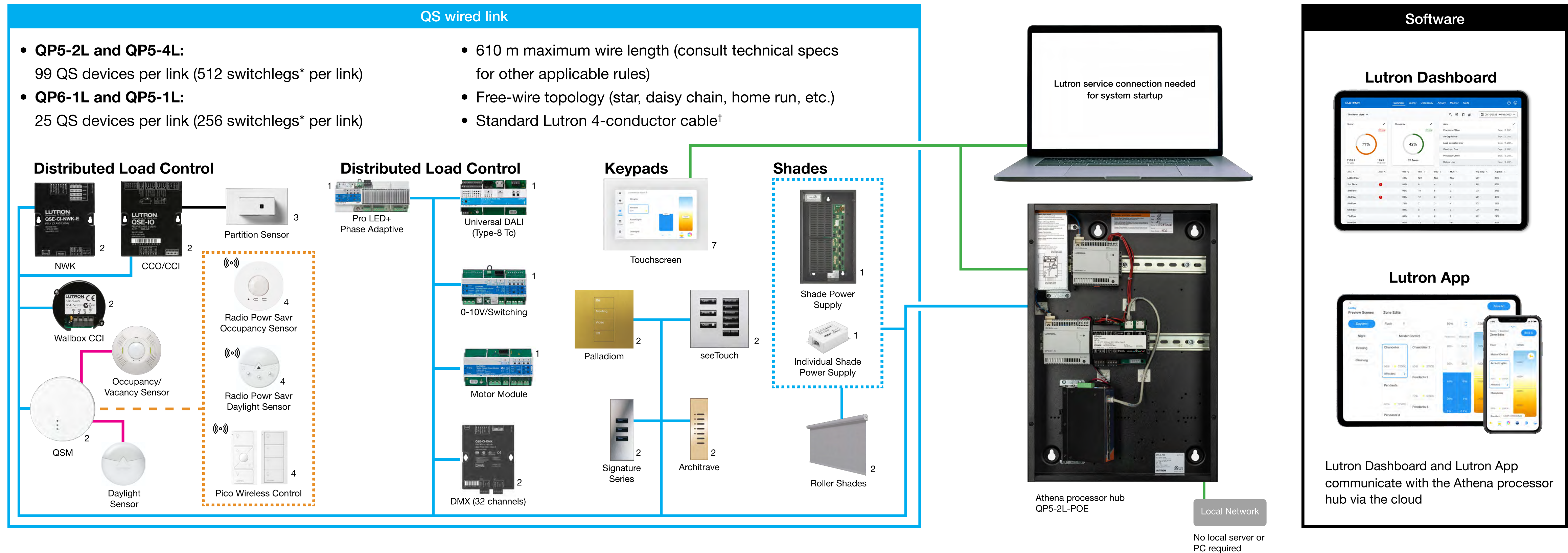


Athena



Athena—a dynamic, all-in-one lighting control system that combines the magic of light with intelligent shades and connected lighting apps to enhance public spaces and optimize operations at any property.

Athena Architecture Diagram



Athena system capacities

- 16 Athena processors (max per system)
- 1600 Athena processors (max per building)

* A switchleg is the smallest controllable point on any product - a single CCO, a zone of 0-10V, or a single DALI address for a fixture.

- QS wired link**
- QSM Wired Sensor link**
- Clear Connect link**
- Modbus link**
- System Ethernet link**
Ethernet connection between processors gateways required for system startup and function

†Pin-out: pin 1 - common, pin 2 - VDC, pin 3 - MUX, pin 4 - MUX

- QS-CBL-LSZH (runs up to 153 m) one pair: 1.0 mm², one pair: 0.5 mm² twisted/shielded
- GRX-CBL-346S-500 (runs up to 153 m) one pair: 1.0 mm², one pair: 0.5 mm² twisted/shielded
- GRX-CBL-46L (runs up to 610 m) one pair: 4.0 mm², one pair: 0.5 mm² twisted/shielded
- RS 485, 24 - 35 VDC powered

The wire gauge required for shade power conductors is dependent on shade size and number, wire run length, and power supply type being used. Consult technical specifications of shade equipment for details.

Power

1. Line voltage 120 VAC
2. Low voltage 24 VAC
3. Low voltage 24 -35 VDC
4. Low voltage 12 VDC
5. Plug-in transformer
6. Battery powered
7. Power over Ethernet (PoE)

Residence Integrations

Lutron dashboard ensures you can easily manage lighting solutions across residential spaces, from rented and serviced to private residences.

Rented

myRoom XC



Serviced or Private

RadioRA 3 and HomeWorks



The Service Difference

Lutron's factory-trained service and support team is here when you need us — and where you need us — from the initial design phase throughout the lifecycle of your project. Whether helping you remotely or on-site, our regional technicians are changemakers you can count on.



Upgrade Existing myRoom Solutions

myRoom XC is the future of guestroom control — if you have a myRoom solution on property, easy upgrades are available.

Templating Streamlines Setup

Save time and reduce cost – the templating feature easily replicates lighting designs for common room types. Program once; software applies to assigned room type.

Flexible Support: Remote or Onsite

Lutron service and support is engineered for your property lifecycle. Cloud-connected systems facilitate remote support whenever and wherever you need us.

Want more Information? Have a question?



[Visit myRoom XC page](#)



[Visit Lutron hospitality page](#)

